

<b>C-1003</b> AN/TB G-1003	14401 31-3 BR 14401 31-29 BR 14401 31-18 BR 13908 31-18 BR 13908 31-12 BR 2001 31-17 BR 14401 31-70 BR 13908 31-50 BR 13919 31-50 BR
<b>C-1004</b> AN/TB B-1004	14401 31-2 BR 14401 31-70 BR 14401 31-29 BR 14401 31-49 BR 14401 31-19 BR 13908 31-18 BR 14401 31-18 BR 15207 31-27 BR 13908 31-12 BR
<b>C-1017</b> AN/TB B-1017	14401 31-1 BR 14401 31-1 BR 14014 31-35 BR 14030 31-51 BR 13932 31-51 BR

<b>C-1109</b> SICHERUNG FUSE IN BOX	30-2 30-11 RT 30-11 RT
<b>C-1115</b> SICHERUNG FUSE IN BOX	15-5 54-3 SW-VI
<b>C-1153</b> RELAYS IN BOX	53C SW 53C SW 318-91 BR-WS 30-11 RT 53-1 SW-GE
<b>C-1155</b> RELAYS IN BOX	31-22 34-2 SW-GN 318-1 BR-WS 318-2 BR-GE 53-1 SW-GE

<b>C-1519</b>	318-2 BR-GE 14401 34-22 SW-GE 318-30 + 318-80 BR-SW 54-2 SW-GN 58-68 + 58-GR 53C SW 30-3 RT 53A-1 SW-VI 53-1 SW-VI
<b>C-1628</b>	31-12 BR 30S-1 SW-GN 30S-1 SW-GN
<b>C-1643</b>	318-1 BR-WS 14401 33- GN 4-3 SW-VI 53B- RT
<b>C-1643</b>	33- GN 53B- RT 54-3 SW-VI 33C SW 31-12 BR

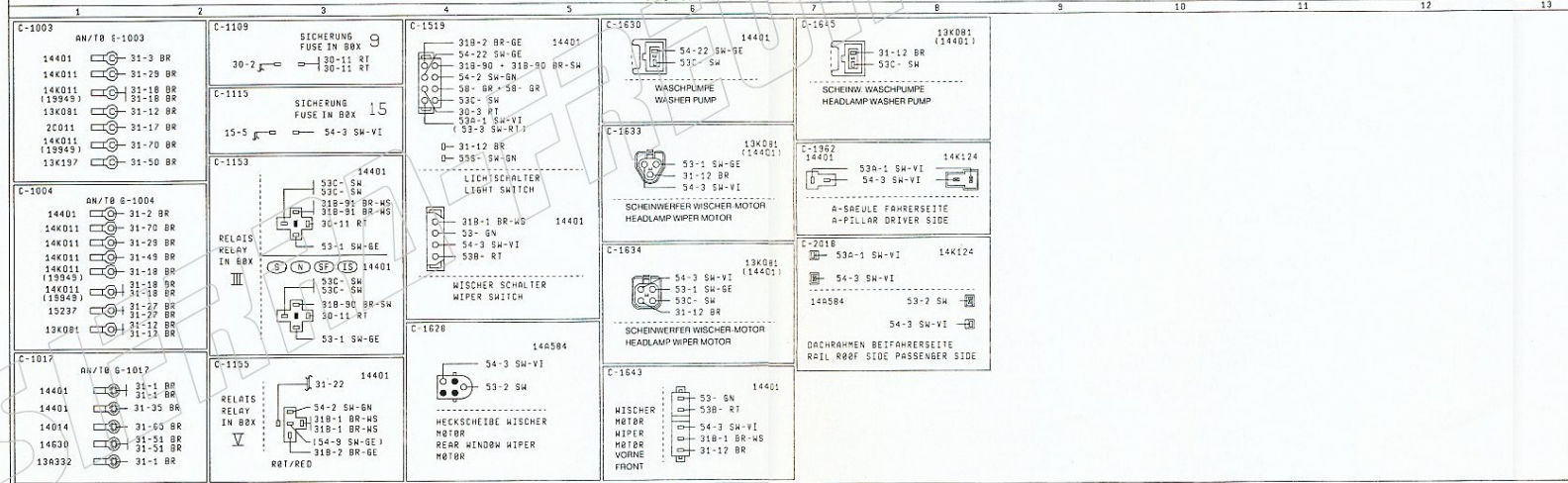
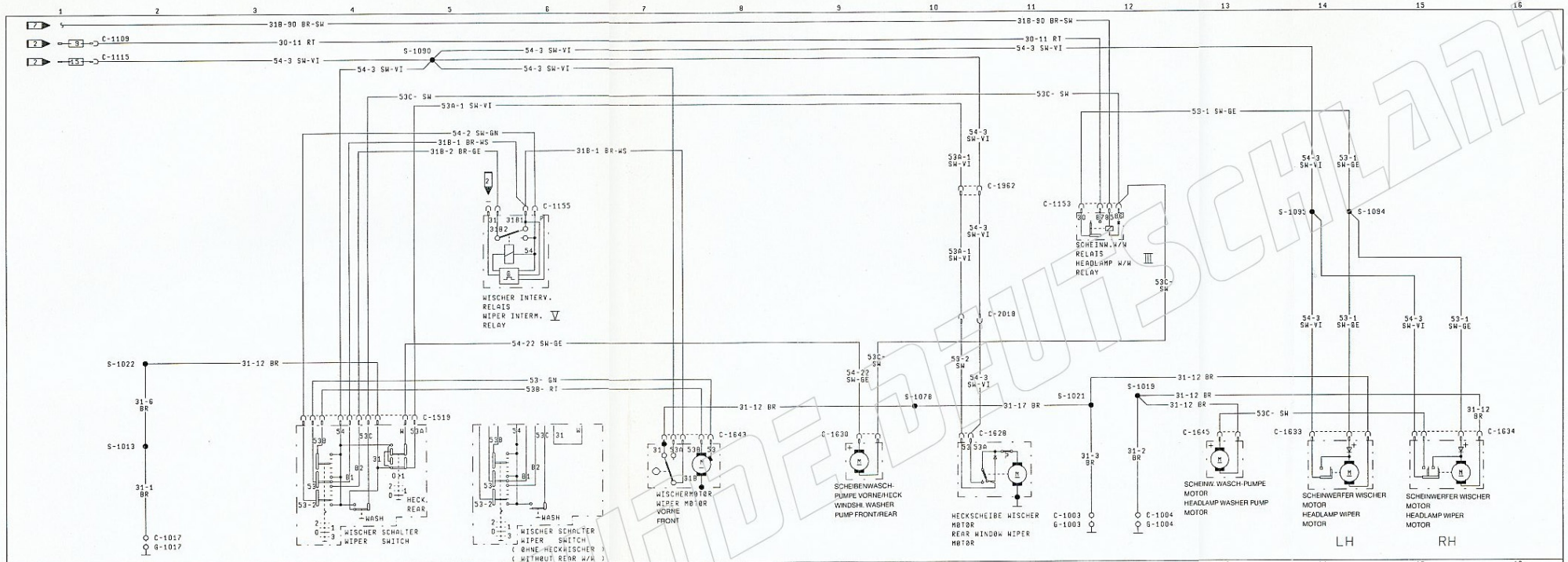
<b>C-1630</b>	54-22 SW-GE 14401 53C SW
<b>C-1633</b>	53-1 SW-GE 13908 31-12 BR 14401 54-3 SW-VI
<b>C-1634</b>	54-3 SW-VI 13908 33C SW 14401 31-12 BR
<b>C-1643</b>	33- GN 14401 53B- RT 54-3 SW-VI 318-1 BR-WS 31-12 BR

<b>C-1643</b>	31-12 BR 53C SW
<b>C-1962</b>	13908 31-12 BR 14401 53C SW
<b>C-1962</b>	14401 53A-1 SW-VI 14K124 54-3 SW-VI
<b>C-1965</b>	14401 53-1 SW-GE 53-1 SW-VI
<b>C-1643</b>	13908 153-11 + 53-1 SW-GE 154-31 + 54-3 SW-VI

<b>C-2018</b>	53A-1 SW-VI 14K124 54-3 SW-VI 140584 53-2 SW
<b>C-2018</b>	DACHRAHMEN BEIFAHRENERSEITE RAIL ROOF SIDE PASSENGER SIDE
<b>C-1962</b>	14401 53A-1 SW-VI 14K124 54-3 SW-VI
<b>C-1965</b>	14401 53-1 SW-GE 53-1 SW-VI
<b>C-1643</b>	13908 153-11 + 53-1 SW-GE 154-31 + 54-3 SW-VI

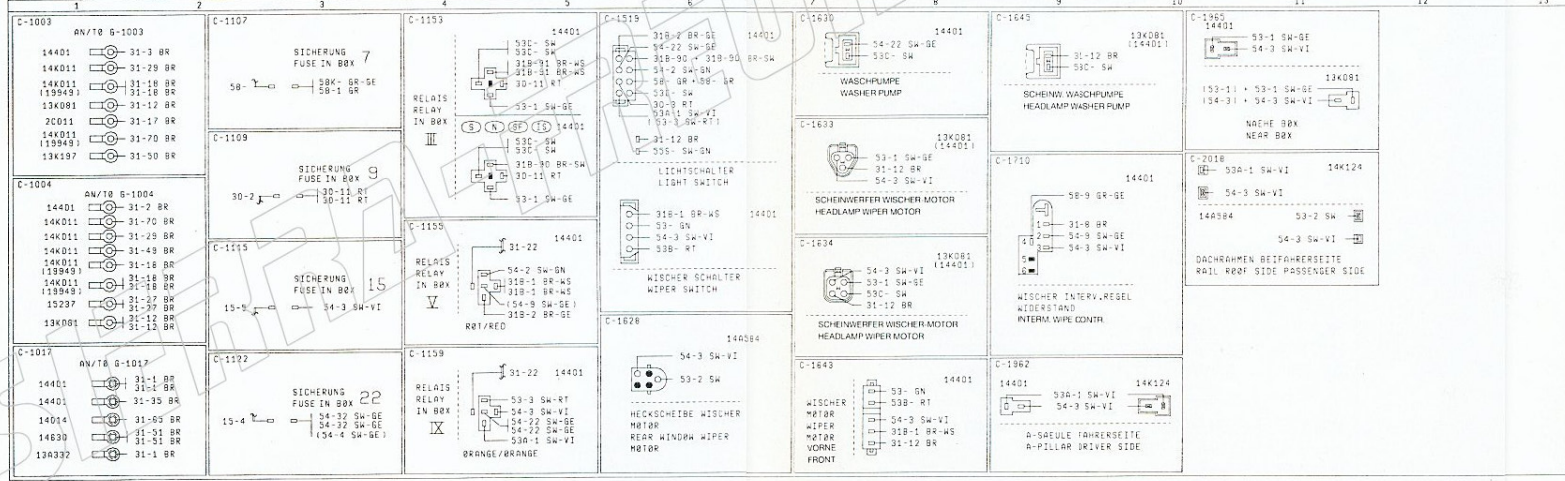
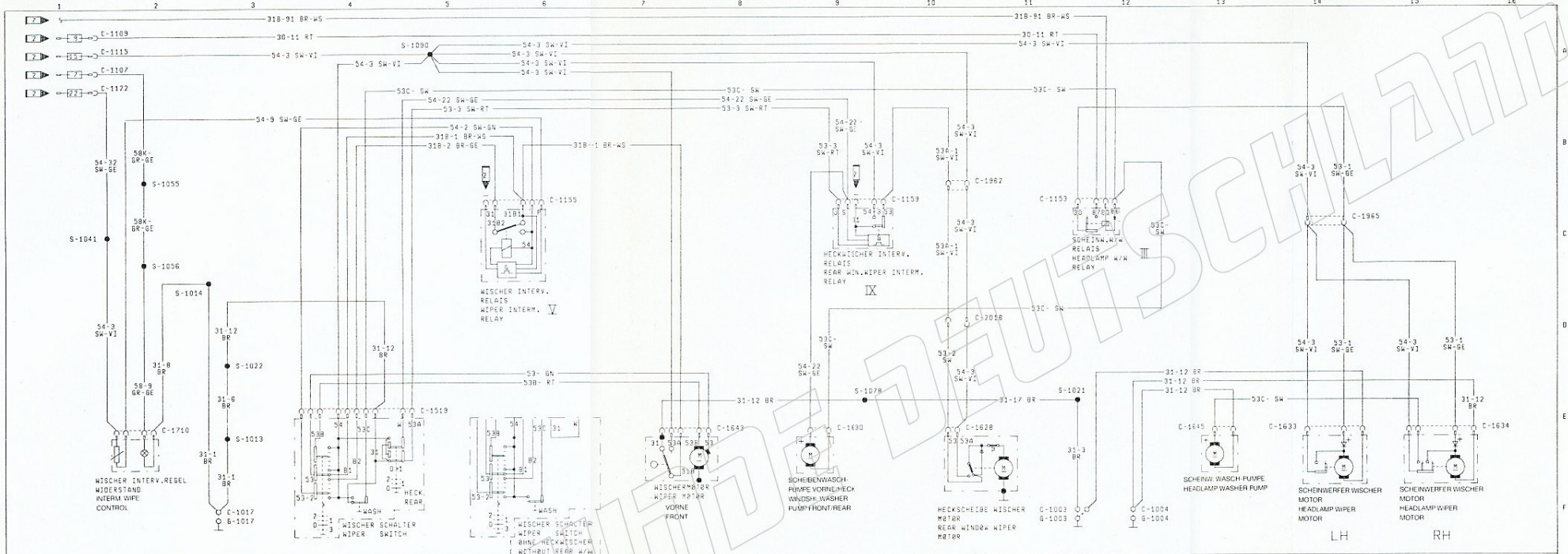
MASSE-CODES UND POSITIONEN/EARTH CODES AND LOCATIONS	
G-1003	LH SCHEINWERFER BEFESTIGUNGSBLECH LH HEADLAMP MOUNTING PANEL
G-1004	RH SCHEINWERFER BEFESTIGUNGSBLECH RH HEADLAMP MOUNTING PANEL
G-1017	HALTER LENNSAULE (HAUPTMASSE) BRACKET STERNO COLLUM SUPPORT (MAIN EARTH)
LÖTSTELLEN-CODES UND POSITIONEN/SOLDERED JOINT CODES AND LOCATIONS	
S-270	IN 13908: NAEHE ABGANG LH MASSE IN 13908: NEAR LH EARTH
S-271	IN 13908: NAEHE ABGANG LH MASSE IN 13908: NEAR LH EARTH
S-1012	IN 14401: NAEHE ABGANG BEH. HECKSCHEIBE SCHALTER IN 14401: NEAR LH HEADLAMP SWITCH
S-1013	IN 14401: NAEHE ABGANG BOX IN 14401: NEAR BOX
S-1019	IN 14401: NAEHE ABGANG RH HAUPTSCHEINWERFER IN 14401: NEAR RH HEADLAMP
S-1021	IN 14401: NAEHE ABGANG LH HAUPTSCHEINWERFER IN 14401: NEAR LH HEADLAMP
S-1022	IN 14401: NAEHE ABGANG ZUEINSCHEINLOSS IN 14401: NEAR IGNITION SWITCH
S-1078	IN 14401: NAEHE ABGANG BREMSFL. WARNSCHALTER IN 14401: NEAR BRAKE FLUID LEVEL SWITCH
S-1090	IN 14401: NAEHE ABGANG BOX IN 14401: NEAR BOX





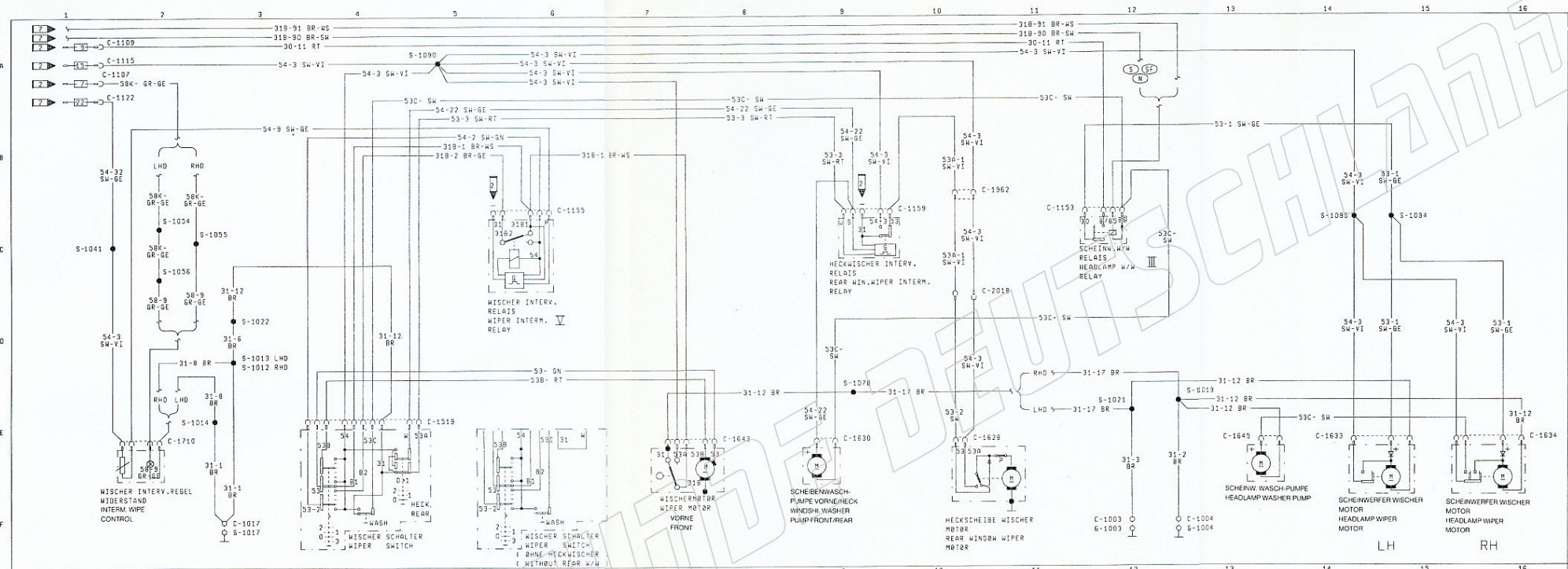
MASSE-CODES UND POSITIONEN/EARTH CODES AND LOCATIONS	
6-1003	LH SCHEINWERFER BEFESTIGUNGSBLECH LH HEADLAMP MOUNTING PANEL
6-1004	RH SCHEINWERFER BEFESTIGUNGSBLECH RH HEADLAMP MOUNTING PANEL
6-1017	HALTER LENKSÄULE (HAUPTFASSE) BRACKET STEERING COLUMN SUPPORT (MAIN EARTH)
LÖTSTELLEN-CODES UND POSITIONEN/SOLDERED JOINT CODES AND LOCATIONS	
S-1013 IN 14401	NAEHE ABGANG BOX IN 14401: NEAR BOX
S-1019 IN 14401	NAEHE ABGANG RH HAUPTSCHEINWERFER IN 14401: NEAR RH HEAD LAMP
S-1021 IN 14401	NAEHE ABGANG LH HAUPTSCHEINWERFER IN 14401: NEAR LH HEAD LAMP
S-1022 IN 14401	NAEHE ABGANG ZUENDSCHLOSS IN 14401: NEAR IGNITION SWITCH
S-1078 IN 14401	NAEHE ABGANG BREMSFL. WARNSCHALTER IN 14401: NEAR BRAKE FLUID LEVEL SWITCH
S-1090 IN 14401	NAEHE ABGANG BOX IN 14401: NEAR BOX
S-1094 IN 14401	NAEHE ABGANG LH HAUPTSCHEINWERFER IN 14401: NEAR LH HEAD LAMP
S-1095 IN 14401	NAEHE ABGANG RH HAUPTSCHEINWERFER IN 14401: NEAR RH HEAD LAMP





MASSE-CODES UND POSITIONEN/EARTH CODES AND LOCATIONS	
G-1003	LH SCHEINWERFER BEFESTIGUNGSBLECH LH HEADLAMP MOUNTING PANEL
G-1004	RH SCHEINWERFER BEFESTIGUNGSBLECH RH HEADLAMP MOUNTING PANEL
G-1017	HALTER LENKSAULE (HAUPTMASSE) BRACKET STEERING COLUMN SUPPORT (MAIN EARTH)
LOTSTELLEN-CODES UND POSITIONEN/SOLDERED JOINT CODES AND LOCATIONS	
S-1013	IN 14401: NAEHE ABGANG BOX IN 14401: NEAR BOX
S-1014	IN 14401: NAEHE ABGANG MASSE HALTER LENKSAULE IN 14401: NEAR BRACKET STEERING COLUMN EARTH BRACKET
S-1021	IN 14401: NAEHE ABGANG LH HAUPTECHSCHEIBEN IN 14401: NEAR LH HEAD LAMP
S-1022	IN 14401: NAEHE ABGANG ZUEHNSCHLOSS IN 14401: NEAR HEATED SWITCH
S-1041	IN 14401: NAEHE ABGANG BEH. HECKSCHEIBE SCHALTER IN 14401: NEAR HEATED REAR WINDOW SWITCH
S-1055	IN 14401: NAEHE ABGANG BEH. HECKSCHEIBE SCHALTER IN 14401: NEAR HEATED REAR WINDOW SWITCH
S-1056	IN 14401: NAEHE ABGANG KLIMAANLAGE LEITUNG IN 14401: NEAR AIR CONDITIONER LEAD
S-1078	IN 14401: NAEHE ABGANG BRUNSEL. WIPERSCHALTER IN 14401: NEAR BRAKE FLUID LEVEL SWITCH
S-1090	IN 14401: NAEHE ABGANG BOX IN 14401: NEAR BOX





C-1003		C-1107		C-1153		C-1159		C-1630		C-1645		C-2018	
AN/19 G-1003		SICHERUNG FUSE IN BOX 7		RELAYS RELAY IN BOX III		LICHTSCHALTER LIGHT SWITCH		WASCHPUMPE WASHER PUMP		SCHEINW. WASCHPUMPE HEADLAMP WASHER PUMP		DACHRAHMEN BEIFahrERSEITE RAIL ROOF SIDE PASSENGER SIDE	
14401	31-3 BR	58	58K-GR-GE	14401	33-1 SW-GE	14401	31-12 BR	14401	54-22 SW-SE	13X081	31-12 BR	14401	53A-1 SW-VI
14K011	31-29 BR								53C-SW	14401	53C-SW	144124	54-3 SW-VI
14K011	31-18 BR												144384
115949	31-19 BR												
13X081	31-12 BR												
20011	31-17 BR												
14K011	31-70 BR												
119349	31-70 BR												
13X297	31-30 BR												
C-1004		SICHERUNG FUSE IN BOX 9		RELAYS RELAY IN BOX V		WISCHER SCHALTER WIPER SWITCH		SCHEINWERFER WISCHER MOTOR HEADLAMP WIPER MOTOR		SCHEINW. WASCHPUMPE HEADLAMP WASHER PUMP		C-1710	
AN/18 G-1004		30-2		31-22		31B-1 BR-WS		33-1 SW-GE		31-12 BR		38-9 BR-GE	
14401	31-70 BR					33	33C-SW						
14K011	31-29 BR					32	33C-SW						
14K011	31-49 BR					31	33C-SW						
14K011	31-18 BR												
115949	31-18 BR												
14K011	31-19 BR												
119949	31-27 BR												
15227	31-27 BR												
13X081	31-12 BR												
C-1017		SICHERUNG FUSE IN BOX 22		RELAYS RELAY IN BOX IX		HECKSCHEIBE WISCHER MOTOR REAR WINDOW WIPER MOTOR		WISCHER MOTOR WIPER MOTOR		SCHEINWERFER WISCHER MOTOR HEADLAMP WIPER MOTOR		C-1962	
AN/10 G-1017		15-4		31-22		54-3 SW-VI		53-2 SW		53A-1 SW-VI		144124	
14401	31-1 BR												
14401	31-35 BR												
14014	31-65 BR												
14630	31-51 BR												
13X332	31-1 BR												
<b>LOTSTELLEN-CODES UND POSITIONEN/SOLDERED JOINT CODES AND LOCATIONS</b> S-1012 IN 14401: NAEHE ABGANG BEH. HECKSCHEIBE SCHALTER IN 14401: NEAR HEATED REAR WINDOW SWITCH S-1013 IN 14401: NAEHE ABGANG BOX IN 14401: NEAR BOX S-1014 IN 14401: NAEHE ABGANG MASSE HALTER LENKSÄULE IN 14401: NEAR STEERING COLUMN MOUNTING BRACKET S-1019 IN 14401: NAEHE ABGANG RH HAUPTSCHEINWERFER IN 14401: NEAR RH HEADLAMP S-1021 IN 14401: NAEHE ABGANG LH HAUPTSCHEINWERFER IN 14401: NEAR LH HEADLAMP S-1022 IN 14401: NAEHE ABGANG ZUENDSCHLOSS IN 14401: NEAR IGNITION SWITCH S-1041 IN 14401: NAEHE ABGANG BEH. HECKSCHEIBE SCHALTER IN 14401: NEAR HEATED REAR WINDOW SWITCH S-1054 IN 14401: NAEHE ABGANG BEH. HECKSCH. SCHALTER IN 14401: NEAR HEATED REAR WINDOW SWITCH S-1055 IN 14401: NAEHE ABGANG BEH. HECKSCH. SCHALTER IN 14401: NEAR HEATED REAR WINDOW SWITCH S-1056 IN 14401: NAEHE ABGANG KLIMAANLAGE LEITUNG IN 14401: NEAR AIR CONDITIONER LOCOM S-1078 IN 14401: NAEHE ABGANG BREMSFL. WAHNSCHALTER IN 14401: NEAR BRAKE FLUID LEVEL SWITCH S-1090 IN 14401: NAEHE ABGANG LH HAUPTSCHEINWERFER IN 14401: NEAR BOX S-1094 IN 14401: NAEHE ABGANG LH HAUPTSCHEINWERFER IN 14401: NEAR LH HEAD LAMP S-1095 IN 14401: NAEHE ABGANG LH HAUPTSCHEINWERFER IN 14401: NEAR LH HEAD LAMP													
<b>MASSE-CODES UND POSITIONEN/EARTH CODES AND LOCATIONS</b> G-1003 LH SCHEINWERFER BEFESTIGUNGSBLECH LH HEADLAMP MOUNTING PANEL 14401 G-1004 RH SCHEINWERFER BEFESTIGUNGSBLECH RH HEADLAMP MOUNTING PANEL G-1017 HALTER LENKSÄULE (HAUPTMASSE) BRACKET STEERING COLUMN SUPPORT (MAIN EARTH)													